

Research article

Open Access

Increased expression of vascular endothelin type B and angiotensin type I receptors in patients with ischemic heart disease

Ivan Dimitrijevic*¹, Marie-Louise Edvinsson¹, Qingwen Chen¹, Malin Malmsjö², Per-Ola Kimblad³ and Lars Edvinsson¹

Address: ¹Department of Medicine, Lund University Hospital, Lund, Sweden, ²Department of Ophthalmology, Lund University Hospital, Lund, Sweden and ³Department of Cardiothoracic Surgery, Lund University Hospital, Lund, Sweden

Email: Ivan Dimitrijevic* - ivan.dimitrijevic@med.lu.se; Marie-Louise Edvinsson - MarieLouise.L.Edvinsson@skane.se; Qingwen Chen - cherqw@hotmail.com; Malin Malmsjö - malin.malmsjo@med.lu.se; Per-Ola Kimblad - Per-Ola.Kimblad@skane.se; Lars Edvinsson - lars.edvinsson@med.lu.se

* Corresponding author

Published: 25 August 2009

Received: 3 November 2008

BMC Cardiovascular Disorders 2009, **9**:40 doi:10.1186/1471-2261-9-40

Accepted: 25 August 2009

This article is available from: <http://www.biomedcentral.com/1471-2261/9/40>

© 2009 Dimitrijevic et al; licensee BioMed Central Ltd.

This is an Open Access article distributed under the terms of the Creative Commons Attribution License (<http://creativecommons.org/licenses/by/2.0>), which permits unrestricted use, distribution, and reproduction in any medium, provided the original work is properly cited.

Abstract

Background: Endothelin-I and angiotensin II are strong vasoconstrictors. Patients with ischemic heart disease have elevated plasma levels of endothelin-I and angiotensin II and show increased vascular tone. The aim of the present study was to examine the endothelin and angiotensin II receptor expression in subcutaneous arteries from patients with different degrees of ischemic heart disease.

Methods: Subcutaneous arteries were obtained, by biopsy from the abdomen, from patients undergoing coronary artery bypass graft (CABG) surgery because of ischemic heart disease ($n = 15$), patients with angina pectoris without established myocardial infarction ($n = 15$) and matched cardiovascular healthy controls ($n = 15$). Endothelin type A (ET_A) and type B (ET_B), and angiotensin type I (AT₁) and type 2 (AT₂) receptors expression and function were examined using immunohistochemistry, Western blot and *in vitro* pharmacology.

Results: ET_A and, to a lesser extent, ET_B receptor staining was observed in the healthy vascular smooth muscle cells. The level of ET_B receptor expression was higher in patients undergoing CABG surgery ($250\% \pm 23\%$; $P < 0.05$) and in the patients with angina pectoris ($199\% \pm 6\%$; $P < 0.05$), than in the healthy controls ($100\% \pm 28\%$). The data was confirmed by Western blotting. Arteries from CABG patients showed increased vasoconstriction upon administration of the selective ET_B receptor agonist sarafotoxin S6c, compared to healthy controls ($P < 0.05$). No such difference was found for the ET_A receptors. AT₁ and, to a lesser extent, AT₂ receptor immunostaining was seen in the vascular smooth muscle cells. The level of AT₁ receptor expression was higher in both the angina pectoris ($128\% \pm 25\%$; $P < 0.05$) and in the CABG patients ($203\% \pm 41\%$; $P < 0.05$), as compared to the healthy controls ($100\% \pm 25\%$). The increased AT₁ receptor expression was confirmed by Western blotting. Myograph experiment did however not show any change in vasoconstriction to angiotensin II in CABG patients compared to healthy controls ($P = n.s.$).

Conclusion: The results demonstrate, for the first time, upregulation of ET_B and AT₁ receptors in vascular smooth muscle cells in ischemic heart disease. These receptors may play a role in the pathophysiology of ischemic heart disease and could provide important targets for pharmaceutical interventions.

Background

The renin-angiotensin and the endothelin systems are essential in vascular homeostasis and may become maladaptive in cardiovascular diseases [1]. Angiotensin II and endothelin-1 are formed in the endothelium and induce potent vasoconstriction and proliferation of vascular smooth muscle cells [2,3]. The continuous production of endothelin-1 and angiotensin II in the endothelium is important for the control of vessel tone and changes in the endothelin- and renin-angiotensin-systems can give rise to dysfunctional vessels such as those seen in patients with cardiovascular risk factors [4]. Endothelin-1 and angiotensin II have therefore been suggested to play a role in the development of cardiovascular diseases, including hypertension [5], chronic heart failure [6] and atherosclerosis [7].

Endothelin-1 mediates its effects through two distinct G-protein coupled receptors; the endothelin type A (ET_A) and type B (ET_B) receptors. During physiologic conditions, the ET_A receptor is the dominant receptor subtype expressed in vascular smooth muscle cells and mediates contraction, while the ET_B receptor is primarily located on endothelial cells and mediates vasodilatation via the release of nitric oxide and prostaglandins [8]. ET_B receptors on vascular smooth muscle cells have however been observed to be upregulated during pathological conditions such as atherosclerosis [9] and congestive heart failure [10]. Endothelin receptors on vascular smooth muscle cells are both mitogenic, leading to atherosclerosis and can induce strong vasoconstriction, resulting in elevated vascular tone that contributes to the development of ischemic cardiovascular disease.

Two angiotensin II receptors have been identified in man, AT₁ and AT₂ receptors, which are members of the G-protein coupled seven-transmembrane domain receptor family. The vascular effects of angiotensin II are primarily mediated by AT₁ receptors located on smooth muscle cells which induce vasoconstriction and mitogenesis. Conversely, AT₂ receptors are located on endothelial cells and are known to induce vasodilatation, inhibit cell growth and stimulate apoptosis [11]. AT₂ receptors have been shown, although to a lesser extent, in vascular smooth muscle cells. Angiotensin II acts, apart from being a potent vasoconstrictor also as a growth factor that regulates cell growth, differentiation and fibrosis, as well as being implicated in the pathology of heart failure, hypertension and atherosclerosis [11].

In vivo studies on the effects of endothelin-1 and angiotensin II in the human peripheral vasculature have previously mainly been performed using a forearm blood flow model. To the best of our knowledge, this is the first *in vitro* study using peripheral vascular tissue samples iso-

lated from patients with different degrees of cardiovascular disease. The peripheral vasculature is contributing significantly to total peripheral resistance leading to our use of small peripheral arteries and arterioles, obtained from the subcutaneous tissue in patients. Patients with angina pectoris without established myocardial infarction, patients undergoing coronary artery bypass graft (CABG) surgery because of ischemic heart disease and cardiovascular healthy controls, were included in the study. The expressions of endothelin ET_A and ET_B, and angiotensin AT₁ and AT₂ receptors in vascular smooth muscle cells were studied by using immunohistochemistry, Western blot and *in vitro* pharmacology.

Methods

Ethics

The project was approved by the Ethics Committee of Lund University in Sweden (LU Dnr: 308/2004) and conforms to the principles outlined in the Declaration of Helsinki. Each individual provided written consent to the procedure.

Study groups

Three different groups of patients were included in the immunohistochemistry part of the study.

1. Cardiovascular healthy controls (controls). This group consisted of ten healthy volunteers without previous history of chest pain, cardiovascular disease or prior cardiac medications. Blood samples for laboratory analysis were taken prior to the biopsy.
2. Fifteen patients with angina pectoris without established myocardial infarction (patients with angina pectoris). These patients were admitted to the medical emergency unit with angina pectoris without signs of prior or ongoing myocardial infarction as measured by electrocardiogram and biomarkers for myocardial injury. The patients had no history of heart failure. Blood samples for laboratory analysis were taken at the telemetry unit after the chest pain had resolved.
3. Patients undergoing coronary artery bypass graft surgery (CABG) (n = 10). These patients underwent elective CABG because of stable ischemic heart disease confirmed by angiography revealing coronary disease in three arteries. The patients had no prior known myocardial infarction but showed different degrees of heart failure secondary to their heart vessel disorder. Blood samples for laboratory analysis were taken the day before the surgical intervention.

The patient background characteristics are defined in Table 1.

Table 1: Physical and Biochemical Characteristics in the Study Subjects

Variable	Control n = 10	Angina n = 15	CABG n = 10
Age (years)	62 ± 13	64 ± 13	70 ± 5
Smokers	2	4	1
SBP (mmHg)	125 ± 9	142 ± 15*	140 ± 14*
DBP (mmHg)	72 ± 8	76 ± 9	78 ± 12
Total cholesterol (mg/dl)	4.9 ± 1.6	5.3 ± 1.2	4.4 ± 2.4
LDL (mg/dl)	3.5 ± 0.7	3.5 ± 1.1	2.5 ± 1.6
HDL (mg/dl)	1.5 ± 0.5	1.5 ± 0.4	1.3 ± 0.5
Triglycerides (mg/dl)	1.5 ± 0.9	1.7 ± 1.0	1.9 ± 0.9
Apo lipoprotein A (mg/dl)	1.5 ± 0.3	1.6 ± 0.2	1.3 ± 0.5
Apo lipoprotein B (mg/dl)	0.9 ± 0.2	1.0 ± 0.3	0.9 ± 0.3
NYHA class			
I	10	10	4
II	0	0	4
III	0	0	2
IV	0	0	0
NT pro-BNP (ng/L)	106 ± 112	218 ± 243	1626 ± 2157*
C reactive protein (mg/dl)	2.1 ± 1.9	6.2 ± 15.3*	6.9 ± 6.1*
Beta blockers (n)	0	6	7
Statins (n)	0	5	8
ARB or ACEI (n)	0	3	6
HbA1c (%)	4.5 ± 0.5	4.7 ± 0.4	4.7 ± 0.8
BMI (kg/m ²)	28 ± 2	29 ± 5	27 ± 3

Values are expressed as mean ± SD. Statistical analysis was performed using ANOVA with Dunnet's post-test for multiple comparisons. Significance was defined as $P < 0.05$ (*). Abbreviations are: CABG, coronary artery bypass graft surgery; SBP, systolic blood pressure; DBP, diastolic blood pressure; LDL, low-density lipoprotein cholesterol; HDL, high-density lipoprotein cholesterol; NYHA, New York Heart Association Functional Classification; NT-proBNP, N-terminal pro B-type natriuretic peptide; ARB, angiotensin receptor blockers; ACEI, angiotensin converting enzyme inhibitors and BMI, body mass index.

Tissue collection

A biopsy was taken from the subcutaneous tissue of the abdomen. For the control group and the patient with angina pectoris, this was done during local anaesthesia (2 ml, 1% Xylocain; AstraZeneca, Sweden). For the patients undergoing CABG surgery the biopsy was taken under general anaesthesia during the initiation of surgery. A subcutaneous tissue (1 cm³), containing small arteries, was removed from the abdomen. The tissue was frozen in ice-cold isopentane and stored at -80°C.

Immunohistochemistry

The biopsies were stored at -80°C prior to sectioning into 8-μm-thick slices in a calibrated Microm HM500M cryostat (Microm). The sections were fixed and rehydrated in phosphate-buffered saline (PBS). The sections were incubated overnight with rabbit anti-human ET_B (16207, IBL) diluted 1:400, goat anti-human ET_A (sc-21194, Santa Cruz Biotechnologies) diluted 1:50, rabbit anti-human AT₁ (sc-1173, Santa Cruz Biotechnologies) diluted 1:50, rabbit anti-human AT₂ (sc-9040, Santa Cruz Biotechnologies)

diluted 1:50, mouse anti-human CD-31 (M0823, DAKO) diluted 1:100 and mouse anti-human alpha-actin (M0851, DAKO) diluted 1:1000. All dilutions were done in PBS with 10% fetal calf serum. Antibodies to alpha-actin were used to localize smooth muscle cells and antibodies to CD-31 were used to localize endothelial cells. The secondary antibodies used were donkey anti-rabbit CyTM3 conjugated (711-165-152, Jackson ImmunoResearch) 1:100, donkey anti-goat CyTM3 conjugated (705-165-003, Jackson ImmunoResearch) 1:100 and donkey anti-mouse Texas Red conjugated (715-076-150, Jackson ImmunoResearch) 1:200 in PBS. Only secondary antibodies were used as control. The antibodies were directed against a part of the respective receptor protein; this amino acid sequence was used as a control to block the antigenic site. The data from both immunocytochemistry and Western blot are given at the respective company's home page.

In vitro pharmacology

The resistance arteries were removed from the abdomen from cardiovascular healthy patients undergoing abdominal reduction surgery (n = 5) or during CABG surgery (n = 5). The subjects had the same clinical characteristics as those for immunohistochemistry (Table 1). Vessels were placed in saline buffer on ice, transported to the laboratory and subsequently analyzed for their contractile properties in a myograph recording their isometric tension. The vessels were cut into 1-mm-long cylindrical segments and mounted on two L-shaped metal prongs, unilaterally a force displacement transducer continuously recorded the isometric tension [12]. Mounted vessel segments were immersed in vessel baths at 37°C containing a bicarbonate based buffer solution; NaCl (119 mM), NaHCO₃ (15 mM), KCl (4.6 mM), CaCl₂ (1.5 mM), MgCl (1.2 mM), NaH₂PO₄ (1.2 mM), and glucose (5.5 mM). The buffer was continuously aerated with oxygen enriched with 5% CO₂ resulting in pH 7.4. Initially vessels were stretched to a resting tone of 2 mN and was then allowed to stabilize at this tension for 1 h. Contractile capacity of each arterial vessel segment was controlled by exposure to a potassium rich (63.5 mM) buffer solution. Concentration-response curves were obtained by cumulative application of endothelin ET_B receptor agonist, sarafotoxin 6c at increasing concentrations (10⁻¹¹-10⁻⁶ mM), ET-1 (AnaSpec, San Jose, CA) in the concentration range 10⁻¹⁴ to 10⁻⁷ M and angiotensin II in the concentration range 10⁻¹² to 10⁻⁶ M. Before the application of angiotensin II, the arteries were pretreated with the AT₂ receptor antagonist PD-123319 (10^{-5.5} M) for 30 min. After washout, the vessels returned to baseline and endothelin-1 was then added at increasing concentrations (10⁻¹¹-10⁻⁶ mM) when endothelin ET_B receptors were desensitized [13] facilitating endothelin-1 to act solely on the endothelin ET_A receptors. For details see Nilsson *et al.* [14].

The drugs used, endothelin-1 (ET-1), sarafotoxin 6c (S6c), angiotensin II and PD-123319 were purchased from Sigma Chemical Co (St. Louis, MO). They were dissolved in 0.9% NaCl with 10% albumin.

Western Blot Analysis

Human vessels (4 from healthy donors and 5 from CABG patients) were frozen in liquid nitrogen and homogenized in cell extract denaturing buffer (BioSource, USA) with addition of a protease inhibitor cocktail (Sigma, USA). Whole cell lysates were sonicated for 2 min on ice, centrifuged at $15,000 \times g$ at 4°C for 30 min, and the supernatants were collected as protein samples. The protein concentrations were determined using the protein assay reagents (Bio-Rad, Hercules, CA, USA) and stored at -80°C until immunoblotting assay. The protein homogenates were diluted 7:2:1(v/v) with $5\times$ LDS Sample Buffer and $10\times$ DTT Reducer (PAGEgel, Inc. San Diego, CA, USA). A total of $4050 \mu\text{g}$ of protein was boiled for 5 min and separated by 412% SDS Ready Gels (PAGEgel, Inc., USA) for 120 min at 100 v, and transferred electrophoretically to nitrocellulose membranes (Bio-Rad) at 100 v for 60 min. The membrane was then blocked for 1 h at room temperature with phosphate buffered saline (PBS) containing 0.1% Tween-20 (Sigma) and 5% non-fat dried milk, and incubated with sheep anti-ET_B (Enzo Life Sciences Inc., Farmingdale, NY, USA), rabbit anti-AT₁ (Abcam plc., Cambridge, UK), or rabbit anti- β -actin (Cell Signaling Technology, Inc., Boston, MA, USA) polyclonal primary antibodies diluted 1:200-500 overnight at 4°C , followed by incubation with anti-sheep (Abcam plc., UK) or anti-rabbit (Amersham Biosciences, Piscataway, NJ, USA) IgG, horseradish peroxidase (HRP)-conjugated secondary antibodies diluted 1: 5000 for 1 h at room temperature. The probed proteins were developed by LumiSensor Chemiluminescent HRP Substrate kit (GenScript Corp., Piscataway, NJ, USA). To detect multiple signals using a single membrane, the membrane was incubated for 515 min at room temperature with restored plus Western blot stripping buffer (Pierce Biotechnology, Inc., Rockford, IL, USA). The membranes were visualized using a Fujifilm LAS-1000 Luminescent Image Analyzer (Stamford, CT, USA). The quantification of band intensity was analyzed with Image Gauge Ver. 4.0 (Fuji Photo Film Co., LTD., Japan). The expression of target proteins were presented as a relative extent to the level of β -actin and normalized to the percentage of control.

Calculations and statistics

Immunohistochemistry

The experiments were performed using arteries from 15 patients with angina pectoris, 10 patients undergoing CABG surgery and 10 healthy controls. The samples were examined in a fluorescence microscope (Olympus optical Co, LTD, Bx60F5) and the absolute fluorescence intensity was measured with ImageJ <http://rsb.info.nih.gov/ij/>.

Mean fluorescence values in the area selected were obtained in three sections and at four different regions, and the mean values were calculated. Statistical analysis was performed using ANOVA with Bonferroni's or Dunnett's post-test for multiple comparisons. Significance was defined as $P < 0.05$ (*). The data are given in the text as percentage difference relative to the mean fluorescence seen in the control. The results are presented as mean values \pm standard deviation (SD) and N equals number of patients. Values are presented as percent fluorescence in the angina and CABG groups compared with the control patients group, where the control group is set to 100%.

In vitro pharmacology

The contractile reaction in each segment is expressed as percentage of the 63.5 mM potassium induced contraction. E_{max} value represents the maximum contractile response elicited by an agonist, and the pEC_{50} , the negative logarithm of the drug concentration that elicited half the maximum response. Linear regression analysis was applied using values obtained from above and below half-maximum response for calculating the negative logarithm of the concentrations that produced 50% contraction (pEC_{50}). Data are presented as mean \pm standard error of the mean (S.E.M). Statistical analyses was performed using Student's *t*-test.

Western Blot

Comparisons between two groups were performed using two-tailed unpaired Student's *t*-test. A *p*-value less than 0.05 were considered to be significant. Results were presented as mean \pm S.E.M.

Results

Endothelin receptor expression

In healthy controls, the vascular smooth muscle cells stained for ET_A and, to a lesser extent, ET_B receptors. The immunostaining intensities for ET_B receptors were higher in arteries from the patients undergoing CABG surgery ($250\% \pm 23\%$; $P < 0.05$) and from the patients with angina pectoris ($199\% \pm 6\%$; $P < 0.05$), than from the healthy controls (Figure 1 and 2). Furthermore, the levels of ET_B receptor expression were higher in the smooth muscle cell layer in the arteries from the patients undergoing CABG surgery than in the arteries from the patient with angina pectoris (Figure 1B). The levels of ET_A receptor expression, in the smooth muscle cells, were similar in all three groups ($P = \text{n.s.}$). In endothelial cells ET_B receptor immunostaining was primarily observed, however, it was not different among the groups.

Western blot for ET_B receptors detected a single band with the approximate molecular weight of 53 kDa in the artery homogenates from all samples including healthy controls and patients undergoing CABG surgery (Figure 3). Densitometric analysis showed that patients undergoing CABG

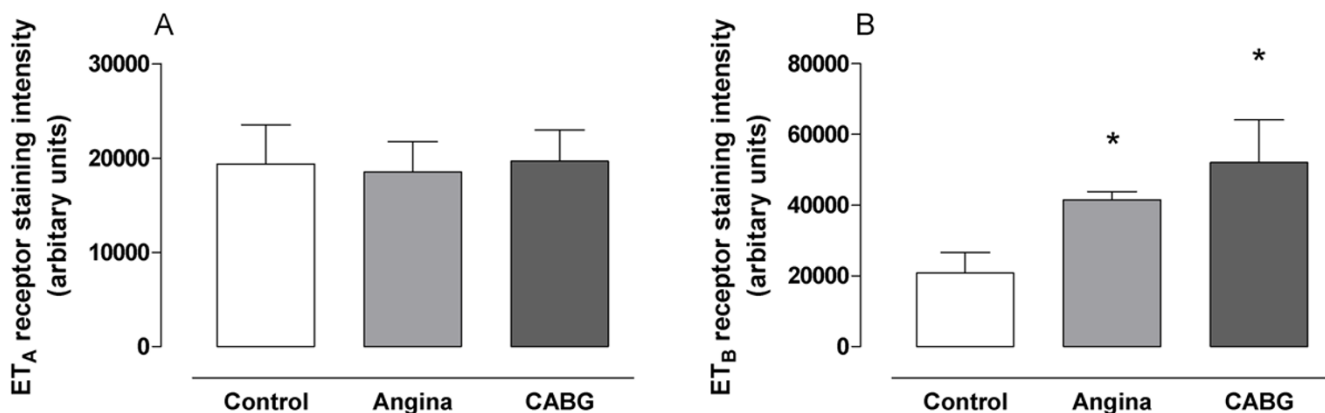


Figure 1
ET_A (A) and ET_B (B) receptor protein expression assessed by immunohistochemistry in human subcutaneous arteries. Vessels were obtained from patients undergoing coronary artery bypass graft (CABG) surgery because of ischemic heart disease (n = 10), patients with angina pectoris without established myocardial infarction (n = 15) and cardiovascular healthy controls (n = 10). Values are expressed as mean ± SD. Statistical analysis was performed using ANOVA with Dunnett's post-test for multiple comparisons. Significance was defined as P < 0.05 (*).

surgery had a mean increase of ET_B receptors expression (133 ± 8%; P < 0.05), which was significantly more than in healthy controls (Figure 3)

Angiotensin II receptor expression

The vascular smooth muscle cells stained for AT₁ and, to a lesser extent, for AT₂ receptors. The levels of AT₁ receptor

expression were higher in both the angina pectoris (128% ± 25%; P < 0.05) and in the CABG patients (203% ± 41%; P < 0.05), than from the healthy controls (Figure 2 and 4). In addition, the levels of AT₁ receptor expression were higher in the smooth muscle cell layer in arteries from patients undergoing CABG surgery than in arteries from patient with angina pectoris (P < 0.05). AT₂ receptor expression was similar in all three groups. In endothelial cells, only AT₂ receptor immunostaining was observed. Since the numbers of cells in the endothelial cell layer are limited, no comparisons were made between the groups. Western blot for AT₁ receptors detected a single band with the approximate molecular weight of 41 kDa in the artery homogenates from all samples including healthy controls and patients undergoing CABG surgery (Figure 3). Densitometric analysis showed that patients undergoing CABG surgery had a mean increase of AT₁ receptors expression (137 ± 9%; P < 0.05) which was significantly more than in healthy controls (Figure 3).

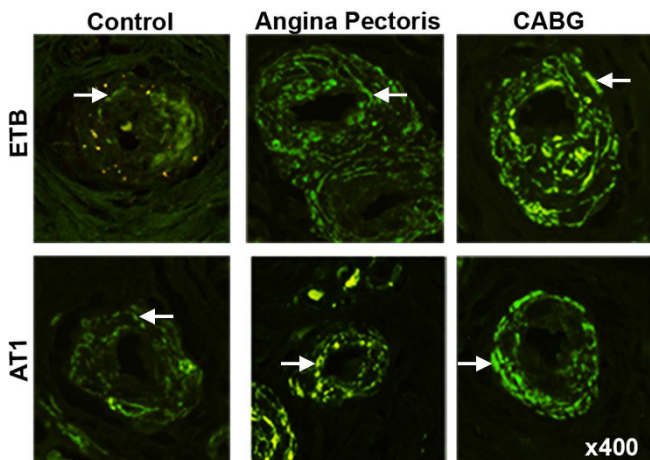


Figure 2
Representative examples showing immunofluorescence staining experiments for ET_B and AT₁ receptors in human subcutaneous arteries. Vessels were obtained from patients undergoing coronary artery bypass graft (CABG) surgery because of ischemic heart disease (n = 10), patients with angina pectoris without established myocardial infarction (n = 15) and cardiovascular healthy controls (n = 10). Note that the immunostaining intensity for both ET_B and AT₁ receptors, indicated with arrows, is higher in the arteries from patients with ischemic heart disease then from healthy controls. Magnification × 400 for all photomicrographs.

Actin and CD-31 immunostaining

Double immunostaining showed co localization between on one hand the AT₁ and ET_B receptors and on the other hand smooth muscle cell alpha-actin in resistance arteries. As shown in the illustration (Figure 5) there was clear co localization between the two receptor subtypes and alpha-actin both in control and in CABG subjects. CD-31 was used to stain endothelial cells; we observed weak co localization between both receptor and CD31 (Figure 5).

In vitro Pharmacology

The selective ET_B receptor agonist S6c was used to study ET_B mediated contraction. Afterwards ET-1 induced vasoconstriction was studied when endothelin B receptors were desensitized by the previous application of S6c leav-

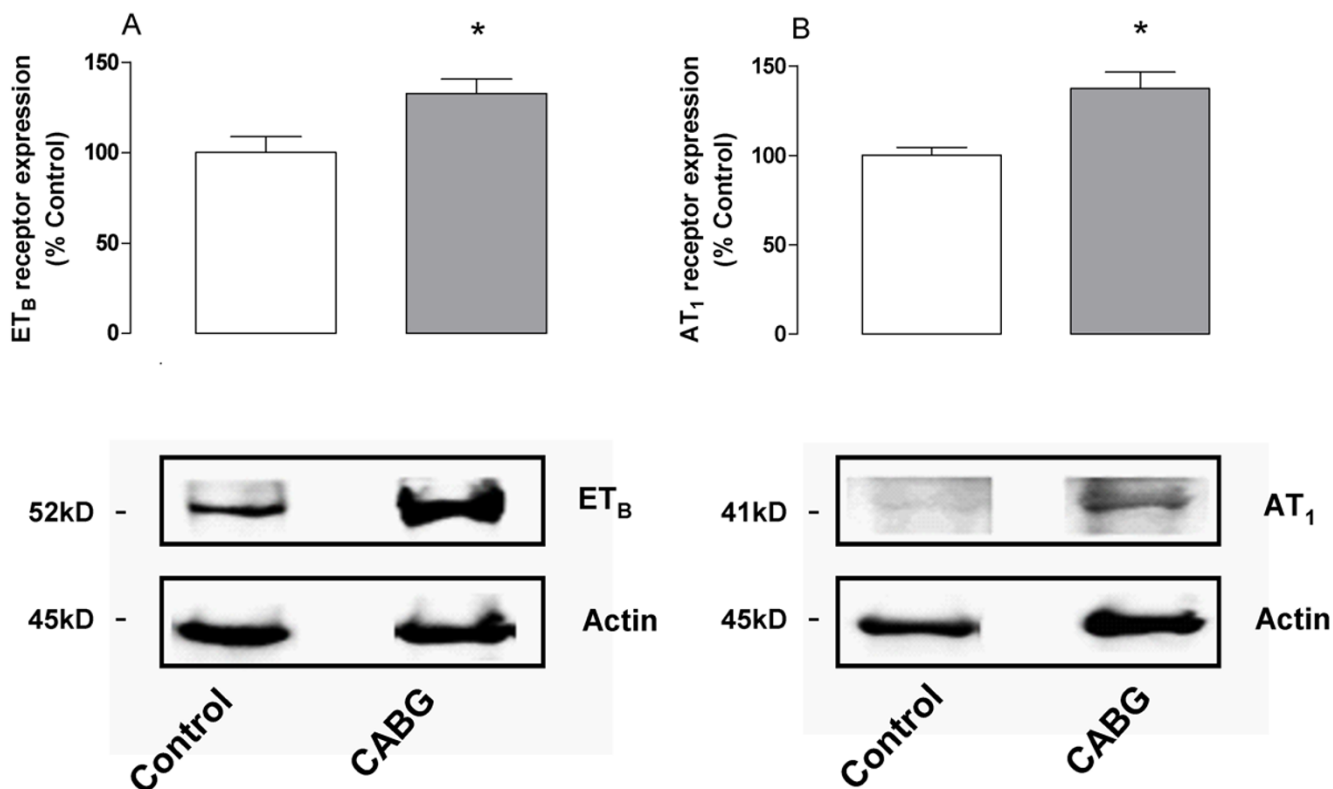


Figure 3

ET_B (A) and AT₁ (B) receptor protein expression in human subcutaneous arteries, examined using Western blot. Arteries from healthy control patients (n = 4) were compared with arteries from patients undergoing CABG surgery (n = 5). The results are shown as mean values ± S.E.M above the actual Western blot data with beta-actin as control. Statistical analyses was performed using Student's t-test, where P < 0.05 (*) was considered significant.

ing only ET_A receptors available for a contractile response. Sarafotoxin 6c induced no vasoconstriction in healthy control vessels. On the other hand patients undergoing CABG showed a fairly strong and significant contractile response to the cumulative application of S6c (P < 0.05 n = 5) suggesting upregulation of ET_B receptors at the functional level (Figure 6A). Endothelin-1 induced a potent vasoconstriction in both healthy controls and in patients undergoing CABG surgery (P = ns) indicating that there were no obvious changes in the ET_A receptor responses between the two groups (Figure 6B). Angiotensin II induced concentration-dependent contractions of the arteries were strong but there were no differences between the groups (Figure 6C). The potassium rich buffer (124 mM) resulted in strong persistent contractions of the resistance arteries with no differences between the groups (data not shown).

Demographics

The patients' background characteristics are described in Table 1. Taken together, the systolic blood pressure and C reactive protein were higher in the patient with ischemic

heart disease (both CABG and angina pectoris). The plasma levels of N-terminal pro B-type natriuretic peptide (NT-proBNP) were higher in the CABG and the angina pectoris groups than in the cardiovascular healthy controls.

Discussion

Endothelin receptor expression and function

Our results clearly show that the level of ET_B receptor expression is higher in the vascular smooth muscle cell layer of arteries from patients with angina pectoris than from healthy controls. The levels of ET_B receptor expression are even higher in arteries from patients undergoing CABG surgery. We hypothesize that there is a progressive upregulation of this receptor subtype that may correlate with the degree of cardiovascular disease.

Upregulated ET_B receptors on vascular smooth muscle cells have previously been shown in diabetes, hypertension and in human atherosclerotic coronary arteries and in atherosclerotic plaques [9,15,16]. Plasma levels of ET-1 are elevated in patients with ischemic heart disease and in

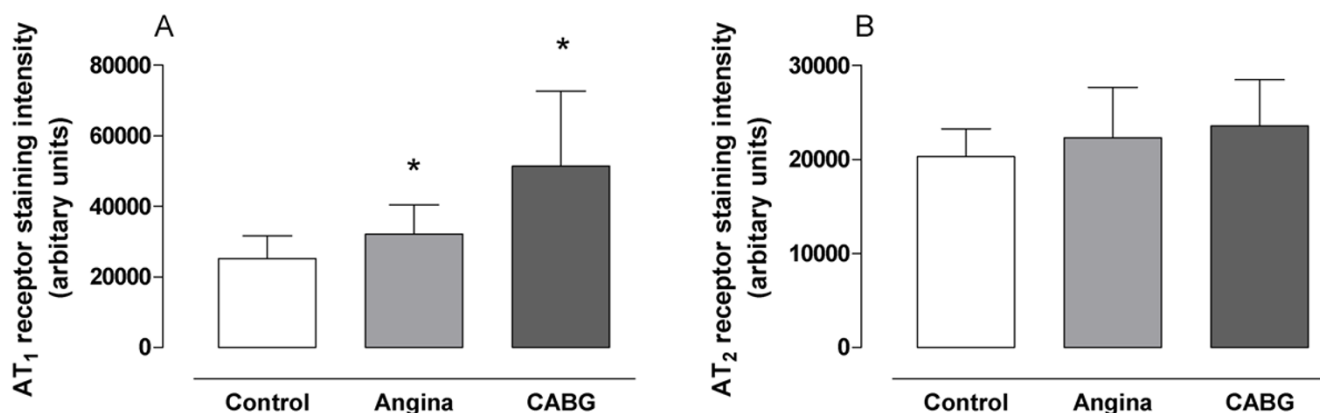


Figure 4

AT₁ (A) and AT₂ (B) receptor protein expression assessed by immunohistochemistry in human subcutaneous arteries. Vessels were obtained from patients undergoing coronary artery bypass graft (CABG) surgery because of ischemic heart disease ($n = 10$), patients with angina pectoris without established myocardial infarction ($n = 15$) and cardiovascular healthy controls ($n = 10$). Values are expressed as mean \pm SD. Statistical analysis was performed using ANOVA with Dunnett's post-test for multiple comparisons. Significance was defined as $P < 0.05$ (*).

heart failure; it has been suggested as a prognostic marker [17]. The circulating ET-1 levels are further increased in patients undergoing CABG surgery [18]. This increased activity in the endothelin system may contribute to smooth muscle cell proliferation, vasoconstriction and decreased perfusion in atherosclerotic disease [19-21]. Furthermore, CABG patients had significantly increased pro-BNP levels indicating some degree of heart failure, a condition associated with increased ET_B receptor mediated systemic vasoconstriction [22]. The elevated endothelin ET_B contraction in the present study, also verified by Western blot, indicates that the increased levels of contractile endothelin ET_B receptors on the vascular smooth muscle cells could play an important role in ischemic heart disease since ET_B receptor activation in healthy controls did not induce any contractions at all.

Mechanisms underlying the upregulation of ET_B receptors

The mechanism underlying the increased ET_B receptor expression is not known, but could depend on increased transcription of ET_B receptor mRNA triggered by some of the many humoral factors that are increased in ischemic heart disease. Upregulation of ET_B receptors is known to rely on increased transcription and subsequent translation of receptor mRNA [23]. In the human genome, the 5'-flanking region of the genes encoding the endothelin receptors contain several regulatory elements, like GATA-motifs and E-boxes [24,25]. This indicates that the genes might be activated by for example inflammatory components. Indeed, the presence of interleukin-1 β and TNF- α may enhance the upregulation of vascular ET_B receptors [26]. In agreement, the patients with ischemic heart disease had higher plasma levels of C reactive protein. Atherosclerosis is known to induce a proinflammatory

response [27] and this may in part regulate endothelin receptor expression.

Angiotensin II receptor expression

In the present study, the levels of AT₁ receptor expression were higher in subcutaneous arteries from patients with ischemic heart disease than in the healthy controls as verified by immunohistochemistry and Western blot. The levels of expression were even higher in arteries from patients undergoing CABG surgery. The plasma level of angiotensin II is known to be elevated in different heart conditions, such as heart failure [28], hypertension [29], hypoxia [30], hypercholesterolemia [31] and hyperglycemia [32]. We have found, herein, that this may be associated with enhanced expression of vascular angiotensin II receptors. Angiotensin II is a potent vasoconstrictor and mitogen of coronary artery smooth muscle cells. The stimulation of AT₁ receptors results in progression of atherosclerotic lesions, inflammation and plaque rupture. Increased expression of AT₁ receptors might make the vasculature prone to develop spasm and atherosclerotic plaques, and thus further increase peripheral vascular resistance and reduce lumen. However, we did not observe any enhanced contraction of angiotensin II mediated via AT₁ receptors as a result of an increased expression in the myograph experiments. One explanation to this could be the increased use of AT₁ receptor antagonists in patients undergoing CABG, thus blocking the AT₁ receptors. It is important, however, not to forget that AT₁ receptors apart from their contractile properties also possess other abilities such as regulating cell growth, differentiation and fibrosis which are important in the pathology of heart failure, hypertension and atherosclerosis.

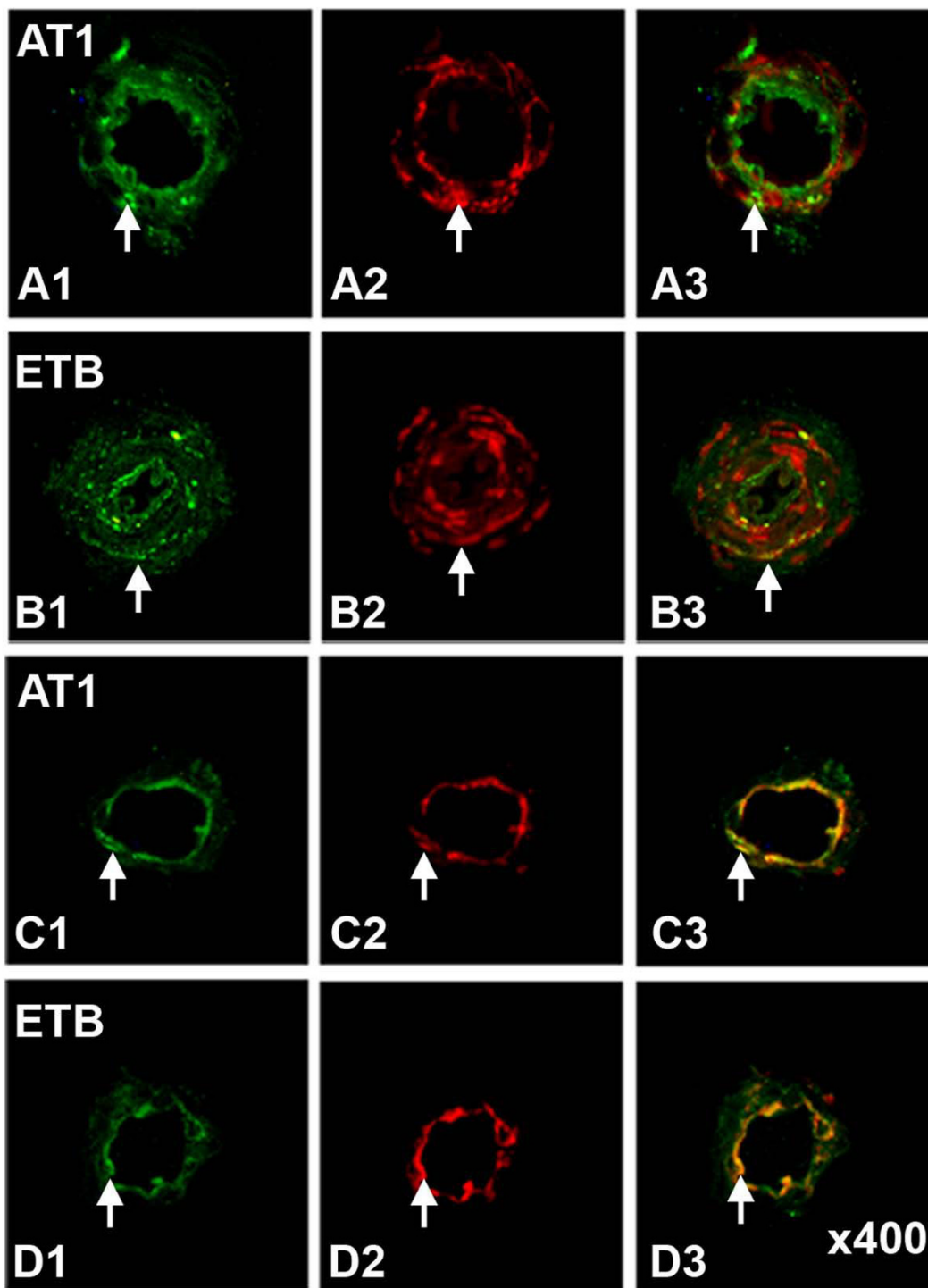


Figure 5
Co localization of the AT₁ and ET_B receptors to vascular smooth muscle cells and endothelial cells. Immunostaining and co localization of the AT₁ and ET_B receptors to alpha-SMC and endothelin in resistance arteries of control patients. Antibodies to AT₁ (green, **A1**, arrow) and smooth muscle actin (red, **A2** arrow), **A3** (merged **A1** and **A2**). Antibodies to ET_B (green, **B1**, arrow) and smooth muscle actin (red, **B2**, arrow), **B3** (merged **B1** and **B2**). Antibodies to AT₁ (green, **C1**, arrow) and CD-31 (red, **C2**, arrow), **C3** (merged **C1**+**C2**). Antibodies to ET_B (green, **D1**, arrow) and CD-31 (red, **D2**, arrow), **D3** (merged **D1** and **D2**). Magnification × 400 for all photomicrographs.

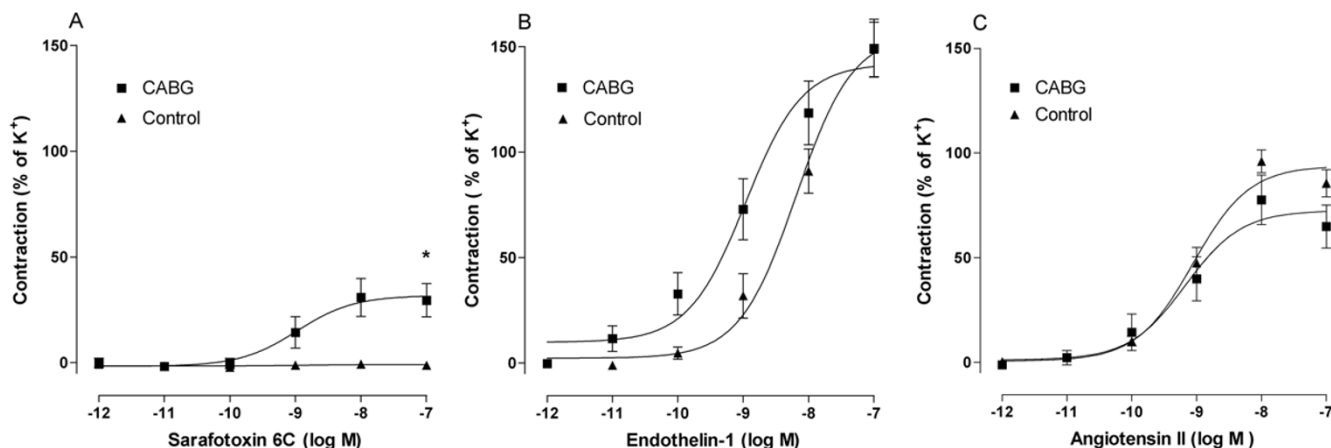


Figure 6

***In vitro* pharmacology.** Concentration-response curves to increasing concentrations of (A) sarafotoxin 6c, (B) endothelin-1, and (C) angiotensin II in arteries from healthy controls (n = 5) and patients undergoing CABG surgery (n = 5). The results are shown as mean values \pm S.E.M of five experiments in each group. Statistical analyses was performed using Student's t-test, where $P < 0.05$ (*) was considered significant.

Mechanisms underlying the upregulation of AT₁ receptors

The mechanisms underlying the upregulation of AT₁ receptor expression in patients with ischemic heart disease cannot be deduced from the present study. Inflammatory mediators, such as IL-1 and IL-6, may upregulate AT₁ receptors and enhance angiotensin II stimulated vessel hypertrophy [33]. In the present study, the observed plasma levels of C reactive protein was elevated in patients with ischemic heart disease. It has previously been shown that high levels of C reactive protein correlate with high levels of AT₁ receptor expression [34]. Increased AT₁ receptor expression has therefore been associated with vascular inflammation. C reactive protein is known to independently predict risk for myocardial infarction, stroke, peripheral artery disease and sudden cardiac death even among apparently healthy individuals [35].

Clinical perspective

Both ET-1 and angiotensin II have strong impact on cardiovascular diseases as discussed above; herein we will discuss their involvements in other situations: CABG surgery is hampered by deleterious vasospasm in arterial grafts. It has been suggested that impaired vasomotor function may contribute to this vasospasm [36]. Plasma levels of ET-1 and angiotensin II are elevated during CABG surgery [18]. Both endothelin and angiotensin II receptors have been shown to mediate strong vasoconstrictor effects in bypass grafts [28]. Many measures have been undertaken to control the vessel tone during surgery, including dilating the vessels with potent vasodilators such as papaverine, sodium nitroprusside and nifedipine, or mechanically distending the vessels with saline. It might be important to consider endothelin and angiotensin II

receptor antagonists for this indication especially since the present results show increased levels of endothelin and angiotensin II receptor expression in patients undergoing CABG surgery.

Angiotensin converting enzyme inhibitors (ACEI) and angiotensin AT₁ receptor antagonists are frequently being used to prevent the development of target organ damage in atherosclerotic disease and in hypertension [37]. Whether endothelin receptor antagonists will become part of the therapeutic armamentarium in ischemic heart disease remains unclear, and none of these agents is currently being developed for this indication. However, the mixed endothelin blocker Bosentan is used in treatment of pulmonary hypertension [38] and other non-selective ET receptor antagonists have been shown to inhibit the development of atherosclerosis in experimental models [39]. New endothelin antagonists devoid of side effects and perhaps specific for either of the receptor subtypes are discussed in treatment of vasospasm after subarachnoid haemorrhage [40], or alternative inhibitors of the endothelin converting enzymes that generate endothelin-1 may in the future become available to block the endothelin system [5].

Limitations

The present study has demonstrated increased expression of ET_B and AT₁ receptors in patients with ischemic heart disease. However, the patients have confounding factors. The systolic blood pressure was higher in patients with ischemic heart disease compared to the healthy controls. Furthermore, the prevalence of medication with statins, beta blockers, ACEI, and AT₁ receptor antagonists was

common in patients with ischemic heart disease while they were non-existing in our healthy controls. The effect of these confounding factors on the endothelin and angiotensin II receptor expression cannot be concluded from the present study.

Conclusion

The present study clearly shows that patients with ischemic heart disease have upregulated ET_B and AT₁ receptors in the smooth muscle cells of peripheral resistance arteries. The level of ET_B and AT₁ expression correlates with the degree of ischemic heart disease, being highest in the patients undergoing CABG surgery. There was no difference in the expression of ET_A or AT₂ receptors between the study groups. The changes in ET_B and AT₁ receptor expression may be signs of remodeling of the vasculature, which is characteristic of ongoing ischemic heart disease.

Competing interests

The authors declare that they have no competing interests.

Authors' contributions

ID planned and executed the immunofluorescence experiments, analyzed the data, performed the surgical procedure and wrote the manuscript. MLE acquired the patient data, the biopsies and reviewed the manuscript. QC performed the Western blot experiments and wrote the associated texts. MM participated in the writing of the manuscript. POK performed the thoracic surgical procedure, removed the vessels and reviewed the manuscript. LE conceived and planned the study, and carefully reviewed the data and assisted in writing of the manuscript.

Acknowledgements

Supported by Swedish Research Council (grant 5958) and the Heart and Lung Foundation.

References

1. Worthley MI, Corti R, Worthley SG: **Vasopeptidase inhibitors: will they have a role in clinical practice?** *Br J Clin Pharmacol* 2004, **57(1)**:27-36.
2. Yanagisawa M, Kurihara H, Kimura S, Tomobe Y, Kobayashi M, Mitsui Y, Yazaki Y, Goto K, Masaki T: **A novel potent vasoconstrictor peptide produced by vascular endothelial cells.** *Nature* 1988, **332(6163)**:411-415.
3. Suzuki H, Eguchi K, Ohtsu H, Higuchi S, Dhobale S, Frank GD, Motley ED, Eguchi S: **Activation of endothelial nitric oxide synthase by the angiotensin II type I receptor.** *Endocrinology* 2006, **147(12)**:5914-5920.
4. Selwyn AP, Kinlay S, Libby P, Ganz P: **Atherogenic lipids, vascular dysfunction, and clinical signs of ischemic heart disease.** *Circulation* 1997, **95(1)**:5-7.
5. Schiffrin EL: **Vascular endothelin in hypertension.** *Vascul Pharmacol* 2005, **43(1)**:19-29.
6. Miyauchi T, Goto K: **Heart failure and endothelin receptor antagonists.** *Trends Pharmacol Sci* 1999, **20(5)**:210-217.
7. Iwasa S, Fan J, Shimokama T, Nagata M, Watanabe T: **Increased immunoreactivity of endothelin-I and endothelin B receptor in human atherosclerotic lesions. A possible role in atherogenesis.** *Atherosclerosis* 1999, **146(1)**:93-100.
8. Miyauchi T, Masaki T: **Pathophysiology of endothelin in the cardiovascular system.** *Annu Rev Physiol* 1999, **61**:391-415.
9. Dagassan PH, Breu V, Clozel M, Kunzli A, Vogt P, Turina M, Kiowski W, Clozel JP: **Up-regulation of endothelin-B receptors in atherosclerotic human coronary arteries.** *J Cardiovasc Pharmacol* 1996, **27(1)**:147-153.
10. Cannan CR, Burnett JC Jr, Lerman A: **Enhanced coronary vasoconstriction to endothelin-B-receptor activation in experimental congestive heart failure.** *Circulation* 1996, **93(4)**:646-651.
11. Mehta PK, Griendling KK: **Angiotensin II cell signaling: physiological and pathological effects in the cardiovascular system.** *Am J Physiol Cell Physiol* 2007, **292(1)**:C82-97.
12. Hogestatt ED, Andersson KE, Edvinsson L: **Mechanical properties of rat cerebral arteries as studied by a sensitive device for recording of mechanical activity in isolated small blood vessels.** *Acta Physiol Scand* 1983, **117(1)**:49-61.
13. Lodge NJ, Zhang R, Halaka NN, Moreland S: **Functional role of endothelin ETA and ETB receptors in venous and arterial smooth muscle.** *Eur J Pharmacol* 1995, **287(3)**:279-285.
14. Nilsson D, Gustafsson L, Wackenfors A, Gesslein B, Edvinsson L, Paulsson P, Ingemansson R, Malmsoj M: **Up-regulation of endothelin type B receptors in the human internal mammary artery in culture is dependent on protein kinase C and mitogen-activated kinase signaling pathways.** *BMC Cardiovasc Disord* 2008, **8**:21.
15. Sullivan ME, Dashwood MR, Thompson CS, Muddle JR, Mikhailidis DP, Morgan RJ: **Alterations in endothelin B receptor sites in cavernosal tissue of diabetic rabbits: potential relevance to the pathogenesis of erectile dysfunction.** *J Urol* 1997, **158(5)**:1966-1972.
16. Kobayashi T, Miyauchi T, Iwasa S, Sakai S, Fan J, Nagata M, Goto K, Watanabe T: **Corresponding distributions of increased endothelin-B receptor expression and increased endothelin-I expression in the aorta of apolipoprotein E-deficient mice with advanced atherosclerosis.** *Pathol Int* 2000, **50(12)**:929-936.
17. Mundhenke M, Schwartzkopff B, Kosterling M, Deska U, Klein RM, Strauer BE: **Endogenous plasma endothelin concentrations and coronary circulation in patients with mild dilated cardiomyopathy.** *Heart* 1999, **81(3)**:278-284.
18. Haak T, Matheis G, Kohleisen M, Ngo H, Beyersdorf F, Usadel KH: **Endothelin during cardiovascular surgery: the effect of diltiazem and nitroglycerin.** *J Cardiovasc Pharmacol* 1995, **26(Suppl 3)**:S494-496.
19. Achmad TH, Rao GS: **Chemotaxis of human blood monocytes toward endothelin-I and the influence of calcium channel blockers.** *Biochem Biophys Res Commun* 1992, **189(2)**:994-1000.
20. Alberts GF, Peifley KA, Johns A, Kleha JF, Winkles JA: **Constitutive endothelin-I overexpression promotes smooth muscle cell proliferation via an external autocrine loop.** *J Biol Chem* 1994, **269(13)**:10112-10118.
21. Rizvi MA, Katwa L, Spadone DP, Myers PR: **The effects of endothelin-I on collagen type I and type III synthesis in cultured porcine coronary artery vascular smooth muscle cells.** *J Mol Cell Cardiol* 1996, **28(2)**:243-252.
22. Cowburn PJ, Cleland JG, McArthur JD, MacLean MR, McMurray JJ, Dargie HJ, Morton JJ: **Endothelin B receptors are functionally important in mediating vasoconstriction in the systemic circulation in patients with left ventricular systolic dysfunction.** *J Am Coll Cardiol* 1999, **33(4)**:932-938.
23. Moller S, Edvinsson L, Adner M: **Transcriptional regulated plasticity of vascular contractile endothelin ET(B) receptors after organ culture.** *Eur J Pharmacol* 1997, **329(1)**:69-77.
24. Arai H, Nakao K, Takaya K, Hosoda K, Ogawa Y, Nakanishi S, Imura H: **The human endothelin-B receptor gene. Structural organization and chromosomal assignment.** *J Biol Chem* 1993, **268(5)**:3463-3470.
25. Hosoda K, Nakao K, Tamura N, Arai H, Ogawa Y, Suga S, Nakanishi S, Imura H: **Organization, structure, chromosomal assignment, and expression of the gene encoding the human endothelin-A receptor.** *J Biol Chem* 1992, **267(26)**:18797-18804.
26. Uddman E, Moller S, Adner M, Edvinsson L: **Cytokines induce increased endothelin ET(B) receptor-mediated contraction.** *Eur J Pharmacol* 1999, **376(3)**:223-232.
27. Hermann M, Enseleit F, Ruschitzka FT: **Anti-inflammatory strategies in hypertension: focus on COX-I and COX-2.** *Curr Hypertens Rep* 2005, **7(1)**:52-60.

28. Wackenfors A, Pantev E, Emilson M, Edvinsson L, Malmstro M: **Angiotensin II receptor mRNA expression and vasoconstriction in human coronary arteries: effects of heart failure and age.** *Basic Clin Pharmacol Toxicol* 2004, **95(6)**:266-272.
29. Savoia C, Touyz RM, Volpe M, Schiffrin EL: **Angiotensin type 2 receptor in resistance arteries of type 2 diabetic hypertensive patients.** *Hypertension* 2007, **49(2)**:341-346.
30. Chassagne C, Eddahibi S, Adamy C, Rideau D, Marotte F, Dubois-Rande JL, Adnot S, Samuel JL, Teiger E: **Modulation of angiotensin II receptor expression during development and regression of hypoxic pulmonary hypertension.** *Am J Respir Cell Mol Biol* 2000, **22(3)**:323-332.
31. Yang BC, Phillips MI, Mohuczy D, Meng H, Shen L, Mehta P, Mehta JL: **Increased angiotensin II type I receptor expression in hypercholesterolemic atherosclerosis in rabbits.** *Arterioscler Thromb Vasc Biol* 1998, **18(9)**:1433-1439.
32. Arun KH, Kaul CL, Ramarao P: **High glucose concentration augments angiotensin II mediated contraction via ATI receptors in rat thoracic aorta.** *Pharmacol Res* 2004, **50(6)**:561-568.
33. Sasamura H, Nakazato Y, Hayashida T, Kitamura Y, Hayashi M, Saruta T: **Regulation of vascular type I angiotensin receptors by cytokines.** *Hypertension* 1997, **30(1 Pt 1)**:35-41.
34. Wang CH, Li SH, Weisel RD, Fedak PW, Dumont AS, Szmítko P, Li RK, Mickle DA, Verma S: **C-reactive protein upregulates angiotensin type I receptors in vascular smooth muscle.** *Circulation* 2003, **107(13)**:1783-1790.
35. Ridker PM: **Inflammatory biomarkers and risks of myocardial infarction, stroke, diabetes, and total mortality: implications for longevity.** *Nutr Rev* 2007, **65(12 Pt 2)**:S253-259.
36. Sellke FW, Boyle EM Jr, Verrier ED: **Endothelial cell injury in cardiovascular surgery: the pathophysiology of vasomotor dysfunction.** *Ann Thorac Surg* 1996, **62(4)**:1222-1228.
37. Schiffrin EL: **Vascular and cardiac benefits of angiotensin receptor blockers.** *Am J Med* 2002, **113(5)**:409-418.
38. Raja SG, Dreyfus GD: **Current status of bosentan for treatment of pulmonary hypertension.** *Ann Card Anaesth* 2008, **11(1)**:6-14.
39. Babaei S, Picard P, Ravandi A, Monge JC, Lee TC, Cernacek P, Stewart DJ: **Blockade of endothelin receptors markedly reduces atherosclerosis in LDL receptor deficient mice: role of endothelin in macrophage foam cell formation.** *Cardiovasc Res* 2000, **48(1)**:158-167.
40. Macdonald RL, Kassell NF, Mayer S, Ruefenacht D, Schmiedek P, Weidauer S, Frey A, Roux S, Pasqualin A: **Clazosentan to overcome neurological ischemia and infarction occurring after subarachnoid hemorrhage (CONSCIOUS-1): randomized, double-blind, placebo-controlled phase 2 dose-finding trial.** *Stroke* 2008, **39(11)**:3015-3021.

Pre-publication history

The pre-publication history for this paper can be accessed here:

<http://www.biomedcentral.com/1471-2261/9/40/prepub>

Publish with **BioMed Central** and every scientist can read your work free of charge

"BioMed Central will be the most significant development for disseminating the results of biomedical research in our lifetime."

Sir Paul Nurse, Cancer Research UK

Your research papers will be:

- available free of charge to the entire biomedical community
- peer reviewed and published immediately upon acceptance
- cited in PubMed and archived on PubMed Central
- yours — you keep the copyright

Submit your manuscript here:
http://www.biomedcentral.com/info/publishing_adv.asp

